



# BEHA

Cornerstone of Confidence

**ArmegaTech**  
Laboratur Sistemleri / Lab. Systems



# Autopsy and Macroscopy Imaging System

## AIMAS



### Imaging Features

- 24MP camera with zoom and autofocus
- A camera that performs both detail imaging and full-body imaging from 2 cm to 205 cm adjustable FOV (field of view) feature
- Easily zoom in, zoom out and take pictures using the body-mounted foot pedal.
- The image displayed by the camera can be viewed on the computer at the same time
- Being able to monitor the process live by connecting to the system remotely
- Ability to record audio and video during the process
- Ability to focus the image on the screen by the user
- Auto focus and defocus feature on the image on the screen with one click
- The feature of making detailed analysis by zooming in an area to be selected on the image on the screen.
- Ability to perform Zoom operation with a motorized system using a computer program
- Making the shooting settings such as ISO, White Balance on the camera with a computer program
- Transferring the recorded image and video files to the management software used by the institution
- Ability to save the captured image files automatically incrementally with a name that the operator enters into the program
- Selection of image format saved as JPEG, raw data (raw) or both
- Automatic recording / backup to multiple locations (internal hard disk, backup disk, institution's server and Cloud) at the same time, according to the user's preference, /eliminating the risk of image loss
- Turkish and English language support in the special software supplied with the system
- Zooming in, zooming out, enlarging, reducing operations can be done on the object examined in the computer program
- Ability to view the previously taken pictures in the software Automatically display the newly taken pictures at the top
- Ability to write text in the desired font, color and size on the recorded picture
- The feature of making square, rectangular, circle markings on the image, enabling the actual size measurement on the image and saving this measurement value in a separate file with the image attached
- Computer program that allows manual calibration of actual size measurement
- Possibility to make 1080p HD quality video telepathology with the camera system with optional software

# Autopsy and Macroscopy Imaging System

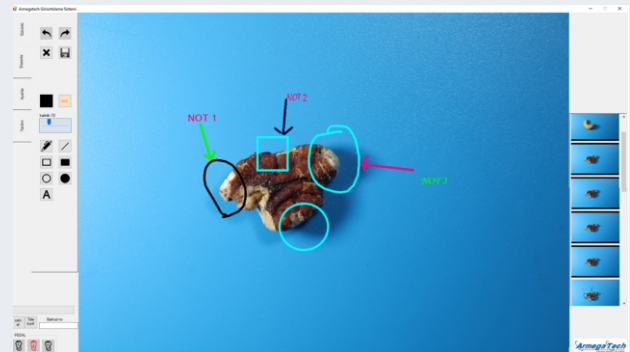
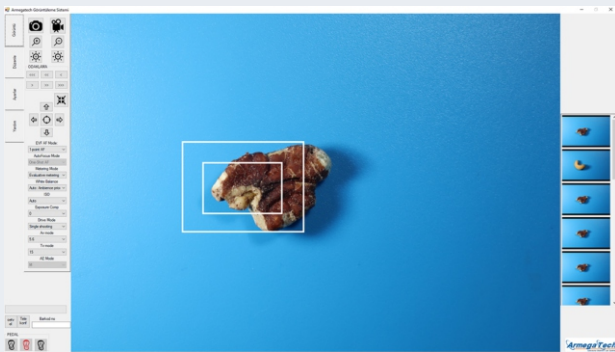
## AİMAS

### Hardware Features

- All-in-one touch screen computer
- Washable keyboard and mouse used with the computer
- Keyboard and mouse on a fixed platform
- Barcode reader
- Body-mounted barcode holder apparatus
- Camera carrier arm mechanism with 3 axis movement and fixed at the adjusted point
- Two handles that can be moved to the desired direction on the camera

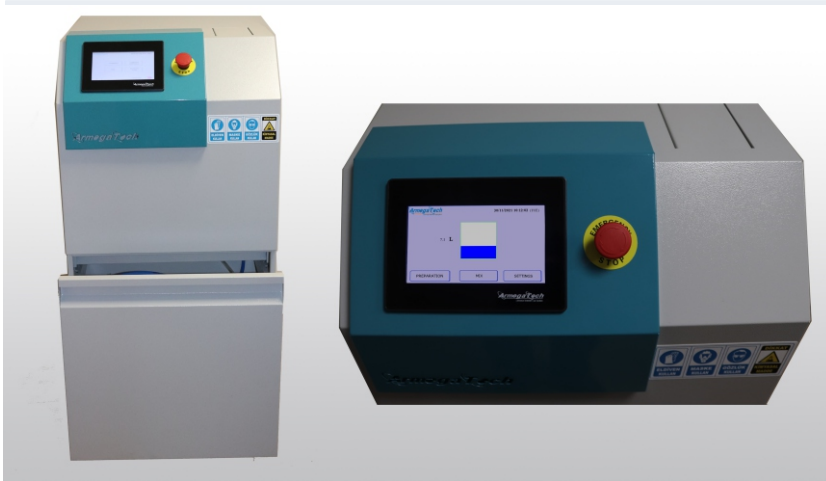
### Other Features

- The energy need was met with a single cable over the 220VAC network.
- The mobile system can operate without an electrical connection
- In case of power failure, monitoring can be performed for at least 6 hours with the UPS integrated into the mobile system
- Turkish and English user manual is provided with the device
- The system has CE certificate



# Automatic Formaldehyde Dosing System

## OFDS-20



### Description

Automatic formaldehyde dosing system performs formalin preparation in pathology laboratories or operation rooms automatically within completely closed environment. Thanks to closed environment and automatic dosing, it allows always accurate and same mixture ratio. By connecting the device to macroscopy cabin or to another desired area, the formalin is fed through the valve. It denies personal subjection and consequently, protects the health. Thanks to closed circuit, formalin ratio remains constant and yields extended time of use. By concentrated dosing performed by the device instead of procuring ready to use formalin, savings up to 90% can be made. Also, the enterprise saves up to 90% of storage area by obtaining concentrated formaldehyde.

### Features

- All body and trays are made of 1 mm thickness steel or oven painted galvanized sheet metal
- A digital screen and control panel to enter/monitor fluid level, dosing parameters and notifications
- Ability to transfer usage logs and reports to PC via USB
- Percentage formalin purity display on digital display (ex. 3,7% formalin)
- Easy 3,7% formalin mixture preparation
- Auto preparation and full the tank continuously after get fluid low level signal (2 liter) with last preparation settings when Auto Mode is activated.
- Water purification system for use with worldwide water quality and periodic filter change alarm
- Ability of mixture preparation on user defined volume and purity
- Tap water inlet, distilled water inlet and dosed formalin outlet connections
- Formaldehyde draw and buffered fluid draw equipment
- Solid powder input feature
- Manual or automatic mixing equipment to yield homogenous distribution and to prevent subsidence
- Waste tank to catch min. 50% liquid in case of liquid overflow
- CE Certification
- Formalin tank capacity: 20 liters
- Power Requirement: 220-240 VAC 8A, 50-60 Hz
- Dimensions (w x l x h): 56 cm x 75 cm x 117 cm
- Weight: 120 kg

### Accessories

- 1 piece formalin drawing hose
- 1 piece buffering hose
- 2 pieces conic silicone bins mouth protector

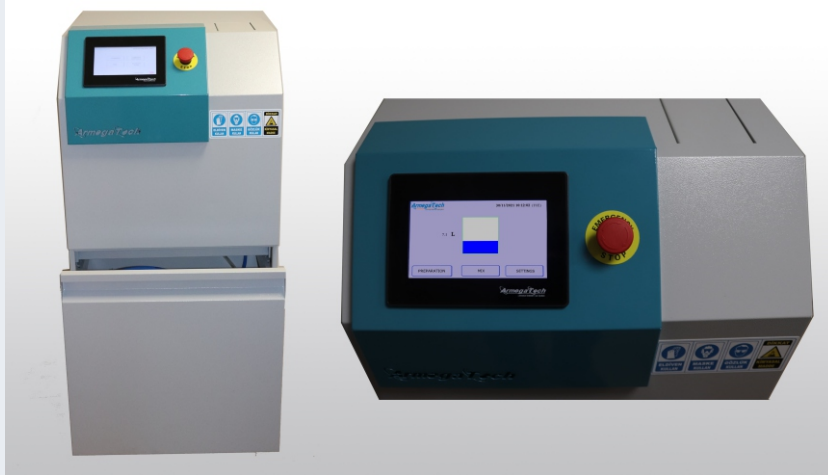
### Optional

- Draining gun and 3 meters external hose
- Formalin preparation system on milliliters grade precision
- Tap water treatment system
- Air carbon filter for cleaning the formaldehyde gas



# Automatic Formaldehyde Dosing System

## OFDS-100



### Description

Automatic formaldehyde dosing system performs formalin preparation in pathology laboratories or operation rooms automatically within completely closed environment. Thanks to closed environment and automatic dosing, it allows always accurate and same mixture ratio. By connecting the device to macroscopy cabin or to another desired area, the formalin is fed through the valve. It denies personal subjection and consequently, protects the health. Thanks to closed circuit, formalin ratio remains constant and yields extended time of use. By concentrated dosing performed by the device instead of procuring ready to use formalin, savings up to 90% can be made. Also, the enterprise saves up to 90% of storage area by obtaining concentrated formaldehyde.

### Features

- All body and trays are made of 1 mm thickness steel or oven painted galvanized sheet metal
- A digital screen and control panel to enter/monitor fluid level, dosing parameters and notifications
- Ability to transfer usage logs and reports to PC via USB
- Percentage formalin purity display on digital display (ex. 3,7% formalin)
- Easy 3,7% formalin mixture preparation
- Ability of mixture preparation on user defined volume and purity
- Tap water inlet, distilled water inlet and dosed formalin outlet connections
- Formaldehyde draw and buffered fluid draw equipment
- Solid powder input feature
- Manual or automatic mixing equipment to yield homogenous distribution and to prevent subsidence
- Waste tank to catch min. 50% liquid in case of liquid overflow
- CE Certification
- Formalin tank capacity: 100 liters
- Power Requirement: 220-240 VAC 8A, 50-60 Hz
- Dimensions (W x L x H): 56 cm x 75 cm x 117 cm
- Weight: 120 kg

### Accessories

- 1 piece formalin drawing hose
- 1 piece buffering hose
- 2 pieces conic silicone bins mouth protector

### Optional

- Draining gun and 3 meters external hose
- Formalin preparation system on milliliters grade precision
- Tap water treatment system
- Air carbon filter for cleaning the formaldehyde gas

# Macroscopy Cabin - One Way

## MK-150ow



### Description

Macroscopy cabin yields a comfortable and reliable macroscopy acquisition by removing the chemical vapor arisen within the working environment. During the acquisition, the functions of the cabin are controlled by buttons, which yield untouched use of each part.

### Features

- Working table of the cabin is from 1,5 mm thickness AISI 316, other parts are from 1 mm thickness AISI 304 stainless steel
- Self ventilated or can be integrated to central ventilation system
- Direct acquisition from formalin tap
- Powering: 220-240 VAC 4,5A, 50-60 Hz
- Dimensions (W x L x H): 150 cm x 75 cm x 180-210 cm ( $\pm 10$  cm) , 90 cm work table height
- Ability of design and production with different dimensions on demand

### Accessories

- Dissection table
- Magnetic strap
- Trash grinder
- Fluorescent lighting
- Hot-cold water tap
- Generic sink
- Formalin thrash sink
- Formalin tap
- Paper towel holder
- Steel ruler
- Residual current circuit breaker
- Fuse switch
- Surface mounted electric outlet
- Glove holder
- A4 paper holder

### Optional

- Automatic formaldehyde dosing system
- Computer stand
- Voice and video recorder mounting parts
- Ultraviolet light
- Sensors for controlling cabin functions

# Macroscopy Cabin - Two Way

## Mk160-tw



### Description

Macroscopy cabin yields a comfortable and reliable macroscopy acquisition by removing the chemical vapor arisen within the working environment. During the acquisition, the functions of the cabin are controlled by buttons, which yield untouched use of each part.

### Features

- Working table of the cabin is from 1,5mm thickness AISI 316, other parts are from 1 mm thickness AISI 304 stainless steel
- Self ventilated or can be integrated to central ventilation system
- Direct acquisition from formalin tap
- Powering: 220-240 VAC 2,5A, 50-60 Hz
- Dimensions (W x L x H): 150 cm x 75 cm x 180-210 cm ( $\pm 10$  cm), 90 cm work table height
- Ability of production with different sizes on demand

### Accessories

- Dissection table
- Magnetic strap
- Trash grinder
- Fluorescent lighting
- Hot-cold water tap
- Generic sink
- Formalin thrash sink
- Formalin tap
- Paper towel holder
- Steel ruler
- Residual current circuit breaker
- Fuse switch
- Surface mounted electric outlet
- Glove holder
- A4 paper holder

### Optional

- Automatic formaldehyde dosing system
- Computer stand
- Voice and video recorder mounting parts
- Ultraviolet light
- Sensors for controlling cabin functions

# Macroscopy Cabin - One Way

## MK-200ow



### Description

Macroscopy cabin yields a comfortable and reliable macroscopy acquisition by removing the chemical vapor arisen within the working environment. During the acquisition, the functions of the cabin are controlled by buttons, which yield untouched use of each part.

### Features

- Working table of the cabin is from 1,5 mm thickness AISI 316, other parts are from 1 mm thickness AISI 304 stainless steel
- Self ventilated or can be integrated to central ventilation system
- Direct acquisition from formalin tap
- Powering: 220-240 VAC 4,5A, 50-60 Hz
- Dimensions (W x L x H): 200 cm x 75 cm x 180-210 cm ( $\pm 10$  cm) , 90 cm work table height
- Ability of design and production with different dimensions on demand

### Accessories

- Dissection table
- Magnetic strap
- Trash grinder
- Fluorescent lighting
- Hot-cold water tap
- Generic sink
- Formalin thrash sink
- Formalin tap
- Paper towel holder
- Steel ruler
- Residual current circuit breaker
- Fuse switch
- Surface mounted electric outlet
- Glove holder
- A4 paper holder



### Optional

- Automatic formaldehyde dosing system
- Computer stand
- Voice and video recorder mounting parts
- Ultraviolet light
- Sensors for controlling cabin functions



# Macroscopy Cabin - Two Way

## MK-220tw



### Description

The macroscopy cabins remove the chemical gases formed in the pathology laboratory from the work area and provide the user with comfortable and safe macroscopy. The cabinet functions don't require using your hand during the macroscopy; it is controlled by buttons without touching. It provides an environment where 4 people can work together at the same time.

### Features

- Working table of the cabin is from 1,5mm thickness AISI 316, other parts are from 1 mm thickness AISI 304 stainless steel
- Self ventilated or can be integrated to central ventilation system
- Direct acquisition from formalin tap
- Powering: 220-240 VAC 2,5A, 50-60 Hz
- Dimensions (W x L x H): 220 cm x 75 cm x 180-210 cm ( $\pm 10$  cm), 90 cm work table height
- Ability of production with different sizes on demand

### Accessories

- Dissection table
- Magnetic strap
- Trash grinder
- Fluorescent lighting
- Hot-cold water tap
- Generic sink
- Formalin trash sink
- Formalin tap
- Paper towel holder
- Steel ruler
- Residual current circuit breaker
- Fuse switch
- Surface mounted electric outlet
- Glove holder
- A4 paper holder

### Optional

- Automatic formaldehyde dosing system
- Computer stand
- Voice and video recorder mounting parts
- Ultraviolet light
- Sensors for controlling cabin functions

# Tissue Storage Cabin

DSD-120



## Description

Tissue storage cabin preserves the tissues in the pathology laboratory and sinks the foetors (bad smells) via the ventilation system.

## Features

- Entire body and shelves are made of 0,9 - 1 mm thickness AISI 304 stainless steel
- Shelves carry up to 100 kgs of weight
- Perforated shelves compatible for ventilation system
- Liquid holder table
- Adjustable swivel castors
- Cabin doors from tempered glass and minimum 8-10 mm of thickness
- Ability of integration to building ventilation system
- Dimensions (W x L x H): 120 cm x 50 cm x 200 cm ( $\pm 10$ cm)
- Ability of production with different dimensions and to fit the environment
- Shelf separations are designed according to user preference

## Accessories

- Fan with 400 m<sup>3</sup>/hour flow rate
- Flexible ventilation hose
- Liquid holder

## Optional

- Sliding glass door
- Swinging glass door
- Sliding metal door
- Swinging metal door

# Chemicals Storage Cabin

## KMD-90



### Description

Hazardous material storage cabins are produced from various materials according to usage purpose, and they yield to a healthy, comfortable and tidy working environment by ensuring the safety within the laboratory. Besides their practical and area-saving structures, they made the working environment more useful by very versatile and functional options. Main benefits may be listed as:

- Minimization of gases that dissipate into the working environment
- Locking a possible leak into the cabin
- Ensuring personal safety against chemical liquids and gases within the working environment
- Storing the chemical materials in the laboratory area

### Features

- Cabin body is made from 1 mm thickness oven painted galvanized sheet metal
- Long life for pathology laboratory and durable to general laboratory conditions
- Containers that collect chemicals and prevent leaks
- Dimensions (W x L x H): 90 cm x 60 cm x 200 cm
- Ability of production with different dimensions

### Accessories

- Air sink grids within cabin
- Mobile or fixed rail system
- Lockable doors

### Optional

- Ex-Proof fan with 250-400 m<sup>3</sup>/hour flow rate

# Autopsy Table and Autopsy Table Ventilation System



## Description

Ergonomic autopsy table with laser-marked cm dimensions, designed for general autopsy work. It is provided with elliptical holes on four sides that allow fluid and air flow. It is have 45 degrees inclined inward on all four sides for correct air flow.

## Features

- Whole body is made of 1,5 mm 316 stainless steel material
- Removable 1,5mm 316 stainless steel trays for cleaning
- In the head part, parts washing bench with pool and sink
- 1,5 mm 316 stainless steel table with 2 holes in the parts washing bench pool
- 1 white Polypropylene tray in the pool of parts washing machine
- 2 wash removable spiral water batteries in the parts washing pool
- One ½ hp power garbage shredder
- Parts washing bench with 3 drawers on the right or left side
- Provides airflow down from 4 corners
- The ventilation system is 140 cm high on the table
- LED lighting system mounted on the autopsy table
- 2 UV lamps covering the autopsy table
- Possibility of mounting a fixed or mobile camera system on the autopsy table
- Autopsy table: WxDxH 230-260 cm x 75-80 cm x 90 cm
- Autopsy table ventilation: WxDxH 210 x 75-80 cm x 20+70cm
- Parts washing bench: WxDxH 260 cm x 60cm x 90cm



# Laboratory Benches



## Description

Laboratory Benches need to withstand all exposure because of workspace of laboratory which are Chemical, Heavy Weight and wet working. The body and adjustable legs of the benches is designed to be resistant to general impacts and different conditions. Under the counter or over the counter cabinets are applied according to the need. At the same time, desktop ventilation channels are designed in necessary areas.



# Emergency Eye and Body Washing Unit

## AGBYU



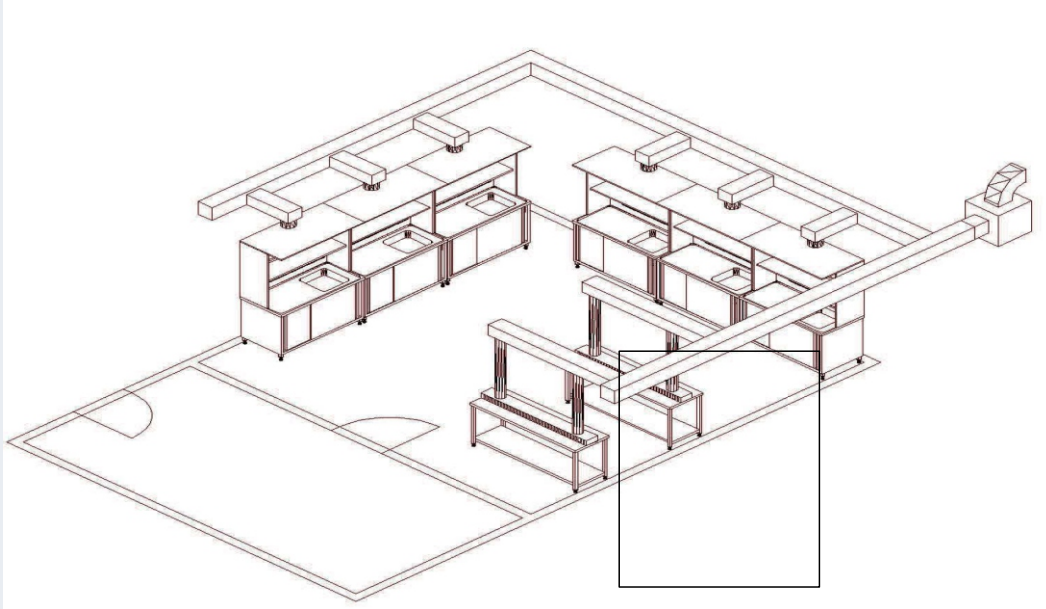
### Description

In case of being subjected to the chemical liquids or acid vapors in the laboratories, first aid should include the washing with lots of water. Emergency eye and body washing unit is designed for such purpose.

### Features

- Conforms to EN 15154-2 standard.
- Hand-commanded operation; compatible to be attached to the ground with its own table.
- All hoses are made from stainless steel.
- Shower head: 30 cm diameter stainless steel or 25 cm diameter ABS (yellow or green)
- Min. 6 liters per minute water flow
- Hoses: 1 1/4" stainless steel
- Water input: 1/2"
- Water output: 1 1/4"

# Ventilation System



As within all other laboratories, a pathology laboratory should have its own central ventilation system. Suction points and flow rates are designed according to laboratory layout by taking into account the devices, cabins and other equipments.



Absorption application directly from work area



Particular application to Laboratory



Ventilation System – Exterior Application





# Student Workbench

## SWB-260



### **Description**

Student workbench is used for educational purposes in universities or education and research hospitals. It also serves as autopsy table. Thanks to the down sink ventilation system, foetors (bad smells) can not reach up to human aspiration level.

### **Features**

- Entire body is made from AISI 316 stainless steel
- Dimensions (W x L x H): 260 cm x 120 cm x 90 cm

### **Accessories**

- Hot/cold valve
- Thrash grinder
- Ventilation connection from bottom

### **Optional**

- Top-down air blowing system
- Lighting system



# BEHA

Cornerstone of Confidence

ArmegaTech Partner in Ukraine

+380 96 451 29 79

info@beha.com.ua

Maidan Plaza 2, Kyiv 01601

**ArmegaTech**  
Laboratuvar Sistemleri / Lab. Systems

Armegatech Laboratuvar Sistemleri  
Dudullu OSB Mah Des Sanayi Sitesi 116  
sokak C -22 Blok No.41  
34760 Ümraniye / İstanbul